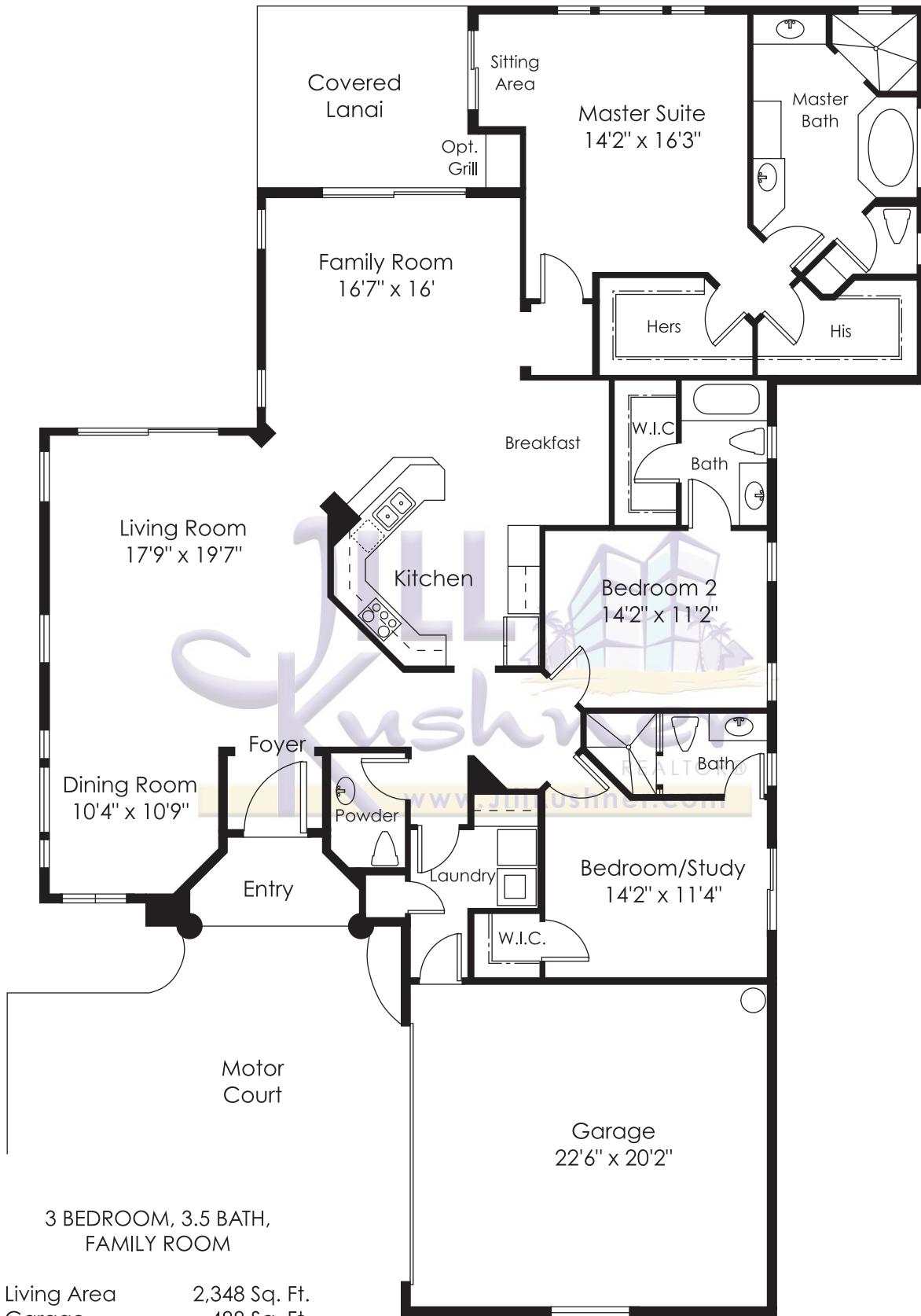


Las Palmas - Cipriani



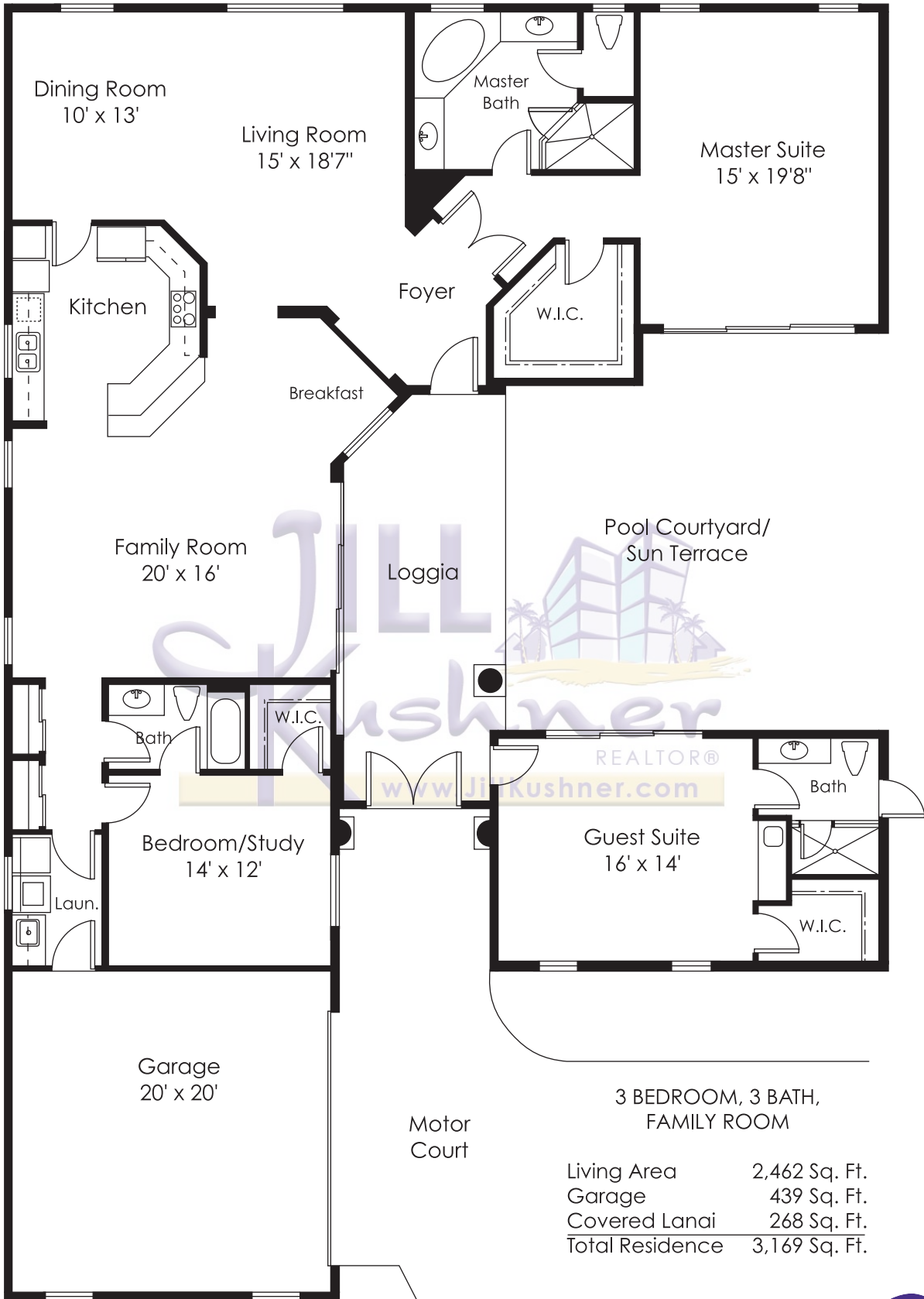
3 BEDROOM, 3.5 BATH,
FAMILY ROOM

Living Area	2,348 Sq. Ft.
Garage	488 Sq. Ft.
Covered Lanai	242 Sq. Ft.
Total Residence	3,078 Sq. Ft.

Direct: 239.691.5505
 JillBKushner@aol.com
 www.JillKushner.com



Las Palmas - Siena



3 BEDROOM, 3 BATH,
FAMILY ROOM

Living Area	2,462 Sq. Ft.
Garage	439 Sq. Ft.
Covered Lanai	268 Sq. Ft.
Total Residence	3,169 Sq. Ft.

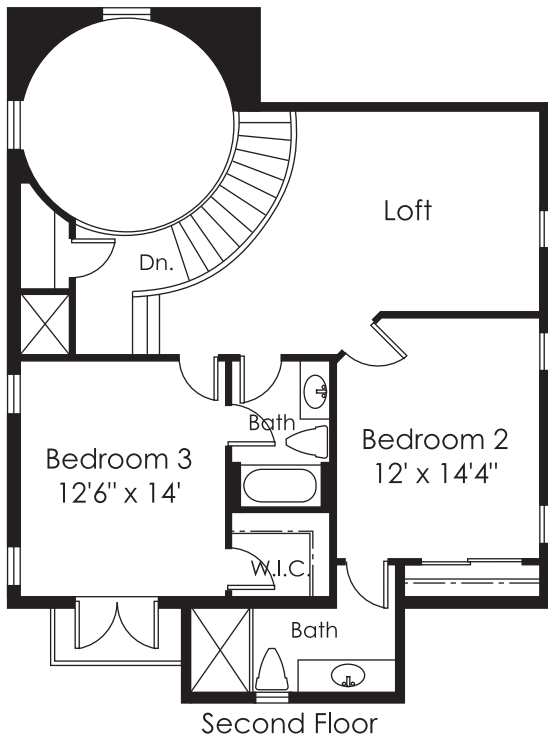
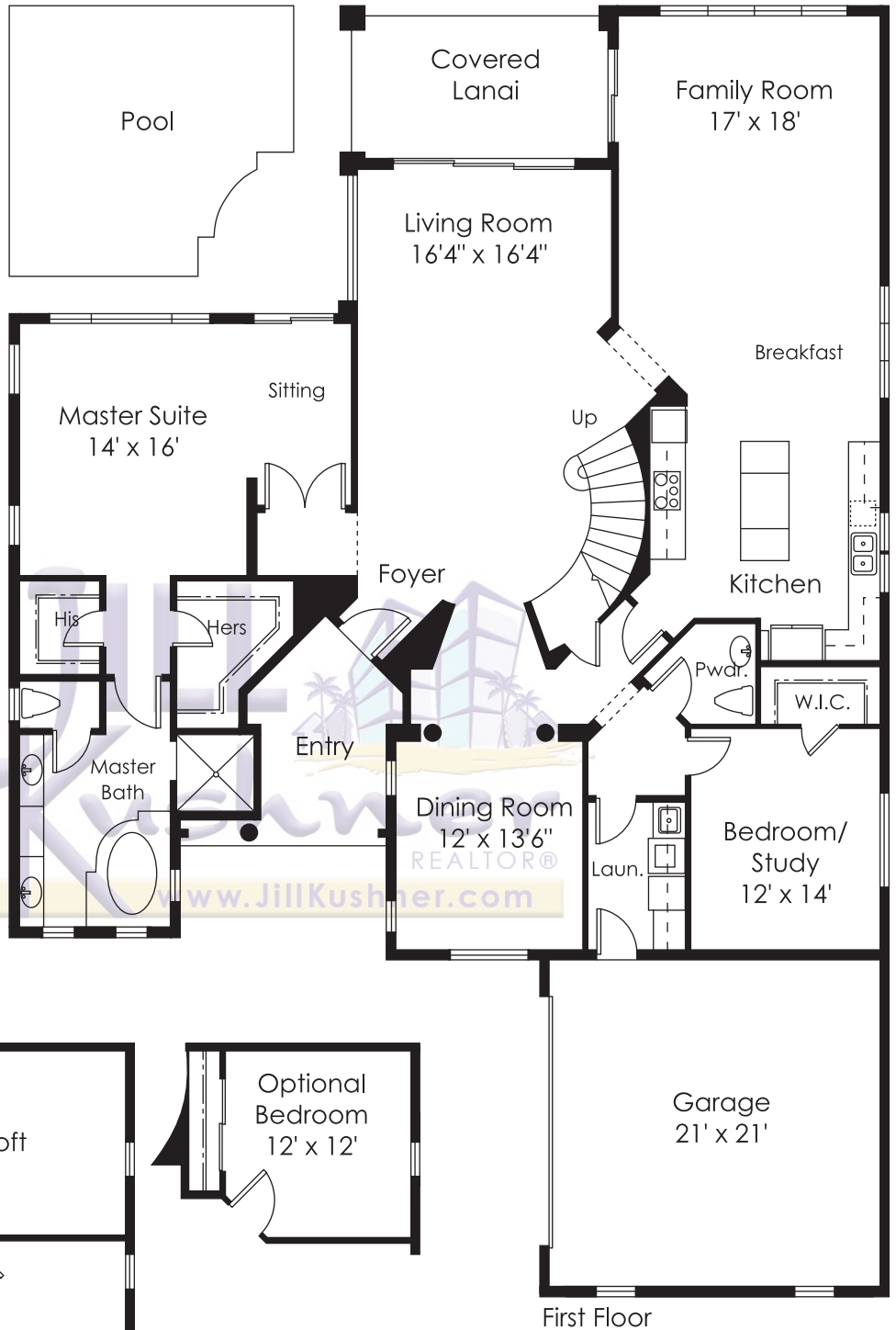
Direct: 239.691.5505
 JillBKushner@aol.com
 www.JillKushner.com



Las Palmas - Trevi

3 BEDROOM, 3.5 BATH,
FAMILY ROOM

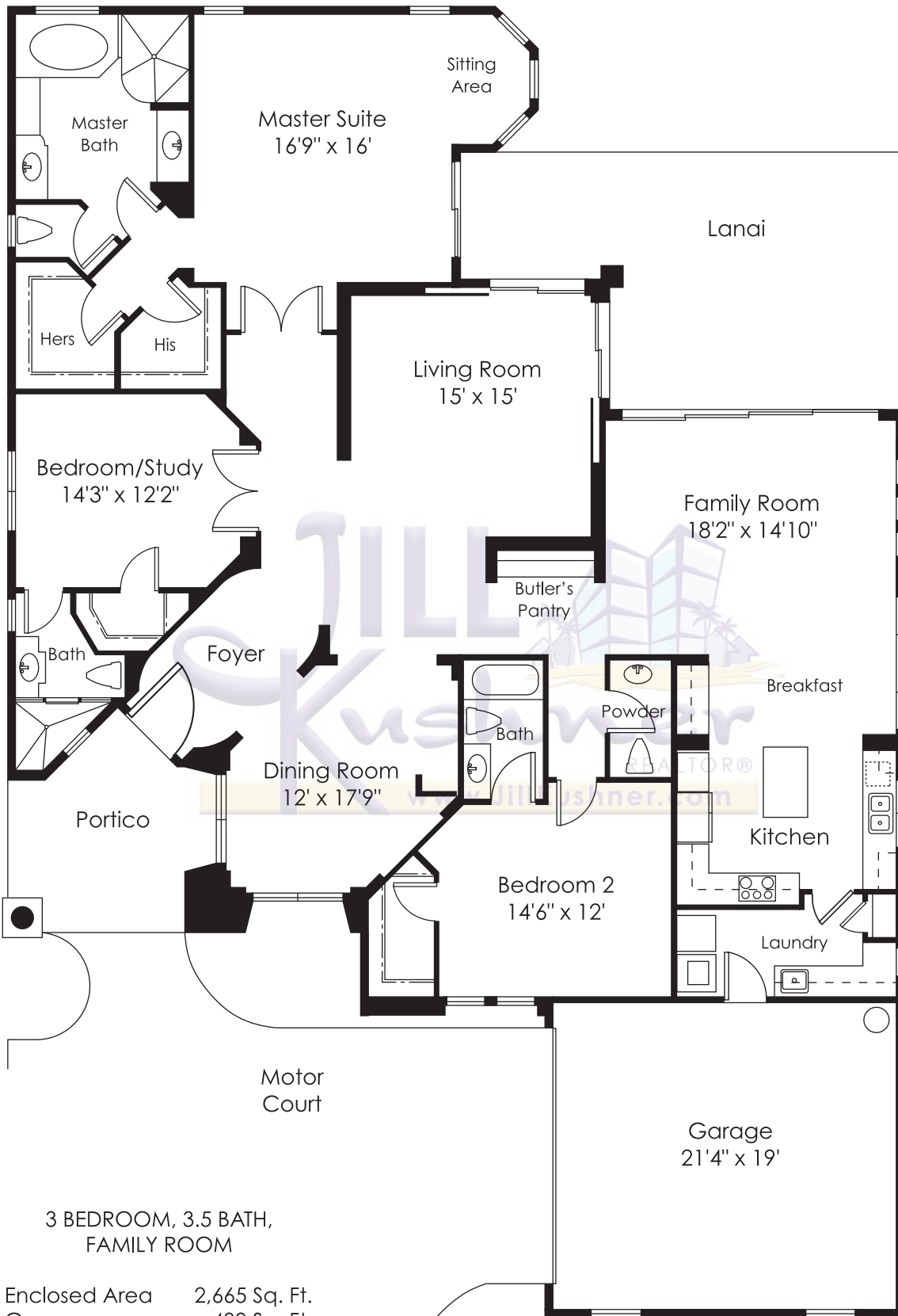
Living Area	3,300 Sq. Ft.
Garage	473 Sq. Ft.
Covered Lanai	289 Sq. Ft.
Total Residence	4,062 Sq. Ft.



Direct: 239.691.5505
 JillBKushner@aol.com
 www.JillKushner.com



Las Palmas - Verona



3 BEDROOM, 3.5 BATH,
FAMILY ROOM

Enclosed Area	2,665 Sq. Ft.
Garage	439 Sq. Ft.
Lanai	304 Sq. Ft.
Total Residence	3,408 Sq. Ft.

Direct: 239.691.5505
 JillBKushner@aol.com
 www.JillKushner.com

